

LCD Master Alarm

General Specifications:

The alarm shall be the Med Touch Master Alarm. The panel shall be microprocessor controlled and designed to comply with NFPA 99. The panel shall incorporate 2.85" LCD touch screen display(s) for groups of up to 8 signal points which shall allow all alarm programming and set up to be done without the use of tools. The unit shall be designed to accept an electrical input range of 120- 240 volts AC – 50-60 hertz. The source voltage shall be stepped down with a self-contained transformer. The panel shall contain audible and visual alarm indicators. The audible alarm may be silenced by pressing the alarm silence button, but the visual alarm indicator can only be cancelled by fault correction. The alarm shall detect and filter out transient (less than 0.6 seconds) signals created by R.F.I. The alarm shall be capable of displaying alarm history for all possible alarm conditions. A security pin code shall be required and must be entered in order to access the programming software.



Features:

The Med Touch Master Alarm Panel monitors and displays normal and alarm conditions from up to 128 remote medical gas source signals and provides alarm conditions as required by the latest edition of NFPA 99. The alarm is ETL listed to UL 1069 and CSA C22.2 # 205 Signal equipment*. Pressure switches, transducers and DISS union check valve connectors are sold separately.

- 2.85" LCD touch screen displays up to 8 normal and alarm conditions for pressure switch sensor inputs
- 2.85" LCD touch screen displays up to 8 normal and alarm conditions and provides a digital pressure display for up to 4 transducer sensor inputs
- 2.85" LCD touch screen displays normal and high/low alarm conditions for one 4 – 20 mA sensor input
- The LCD touch screen allows all alarm programming and set up to be done without the use of tools
- A green normal or red alarm condition for each gas service confirms the condition for each individual gas service
- Emergency preparedness instructions - Med Touch Alarm Panels allow users to set up customized instructions for each alarm signal which appear on the screen when the signal is in alarm
- Up to 128 remote master signals in a single panel
- Up to 4 master boards (32 signals) in a two slot, 8 (64 signals) in a three and 16 (128 signals) in a five slot panel
- Wireless (minimal low voltage wiring) models available
- Last event history (per gas board /signal point)
- Made in the U.S.A. - NFPA pre-loaded gas 'labels'
- English, and English/French pre-loaded languages
- Editable text and alarm 'labels' & Audio and visual alarm indicators
- Self-contained unit - Designed for ease of installation and service
- Self-diagnostic error message display for ease of maintenance
- Bright easy to read LCD displays – clearly visible in both day and night lighting conditions
- Constant display and monitoring of each sensor input
- User programmable high/low set points on transducer and 4 – 20 mA sensor input boards
- Dry contacts provided on the CPU module for general fault condition covering entire panel

Additional features:

- Individual user programmable remote signal alarm points to accept NO or NC signals, or may be disabled. Factory preset to accept Normally Closed signals
- LCD indicators (Green) confirms normal status, (Red) indicates abnormal condition
- Menu of NFPA 99 master alarm signals for quick, easy selection
- Gas specific transducer master signal boards. An error message will be displayed if incorrect sensor or no sensor is attached
- Transducer master signal boards shall be capable of displaying gas readouts in PSI, kPa, BAR, inHg or mmHg
- Alarm repeat feature is factory set at 10 minutes, and is adjustable or may be turned off

LCD Master Alarm

General Specifications:

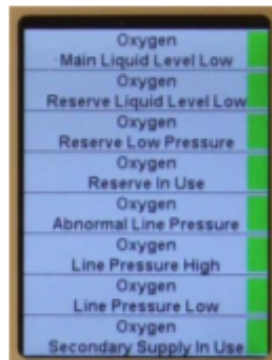
The following options shall be able to be added to the panel at the time of order or after installation;

- Optional Text / e mail notification of alarm events sent to up to 5 addresses
- Optional Ethernet module. This module may be added to any alarm panel. It will provide the following features:
 - * Webserver – allows a remote user access to the alarm’s webpage – viewing a graphic image of the alarm with all signal conditions, pressure & event / history log information
 - * Text notification of alarm conditions (up to 5 addresses)
 - * Modbus & BACnet gateway interface
- Event / history log – maintains a rolling list of the 100 most recent alarm condition events and a file of the 1,000 most recent alarm events and is downloadable through embedded web page
- Event log is viewable and downloadable through embedded web page, including the most recent 1,000 events.
- Optional Ethernet connectivity with embedded web page
- Interface with building automation system via Ethernet



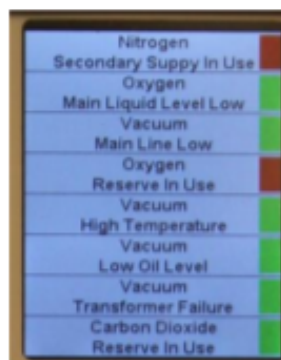
Master / Remote Signal Display (dry contact sensors)

Shown in alarm condition displaying emergency instructions. Display blinks on and off when in alarm condition drawing attention and alternates displaying signal identification with user programmed emergency instructions.



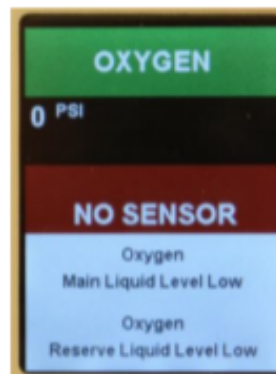
Master / Remote Signal Display (both dry and transducer sensors)

Shown in normal condition. User selects signal labels from database of NFPA signals included in the boards memory. Individual signal points are pre-programmed NC but may be re-programmed as Disabled or NO by user.



Master / Remote Signal Display (dry contact sensors)

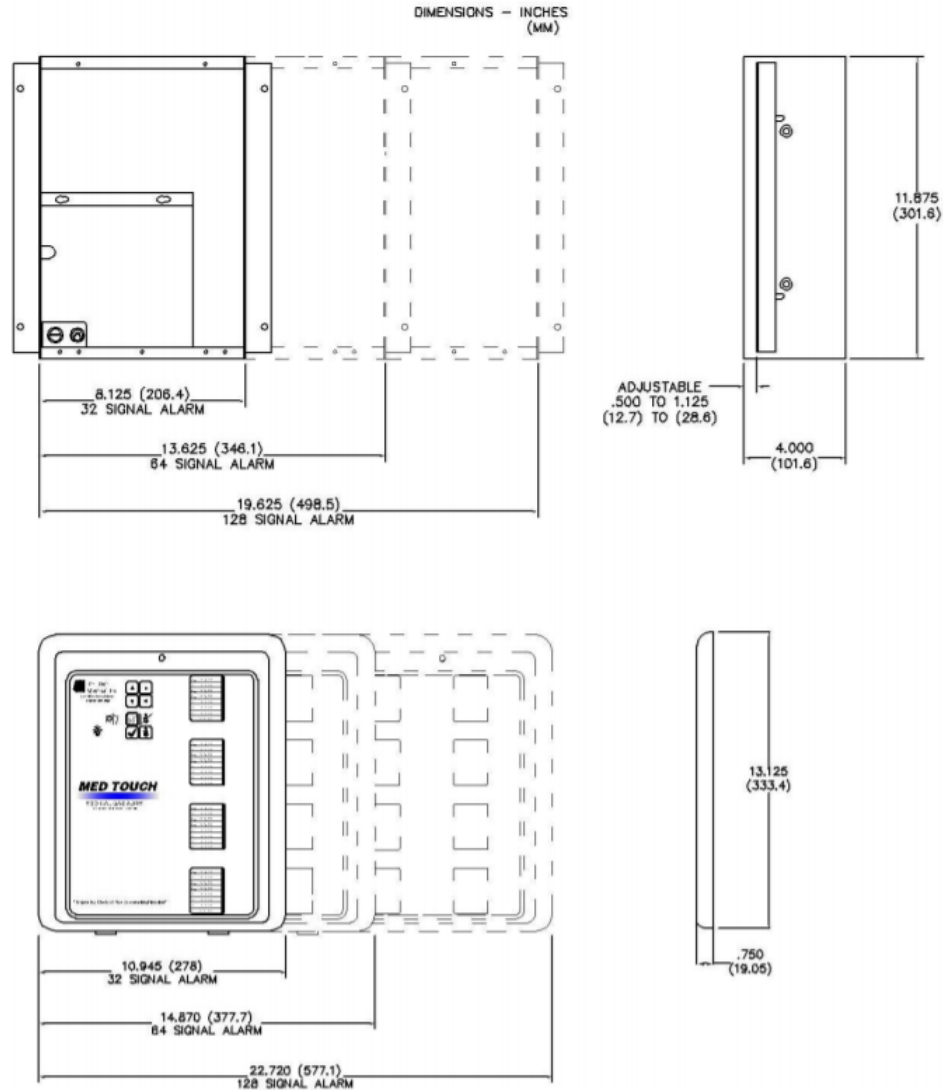
Shown in alarm condition. Display blinks on and off when in alarm condition drawing attention and alternates displaying signal identification with user programmed emergency instructions.



Master / Remote Signal Display (transducer sensors)

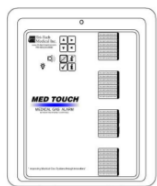
Shown in alarm condition. The standard display looks and acts the same as both of the above Master/ Remote displays. By touching the signal point you wish to view, the display changes to the view shown here providing the additional actual line pressure of the gas being monitored. This may be viewed at any time, in Normal or Alarm condition.

Technical Specifications:

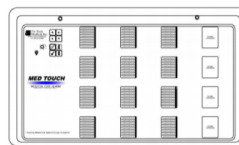


Example: 3 Slot box, English
(48 Functions) = A2M-48

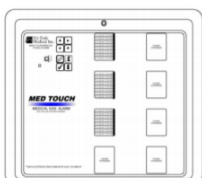
Model Numbers



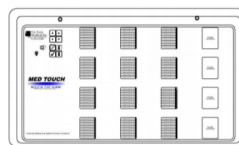
8 functions - 32 functions
A2M-8
A2M-16
A2M-24
A2M-32
2 slot box



72 - 96 functions =
A2M-72B
A2M-80B
A2M-88B
A2M-90B
5 slot box w/ Blank module



40 - 64 functions =
A2M-40
A2M-48
A2M-46
A2M-64
3 slot box



104 - 128 functions =
A2M-104
A2M-112
A2M-120
A2M-128
5 slot box

NOTE: Add "A2A-ETHERNET" for Ethernet Option **NOTE:** AVAILABLE IN 2, 3 & 5 SLOT BOXES