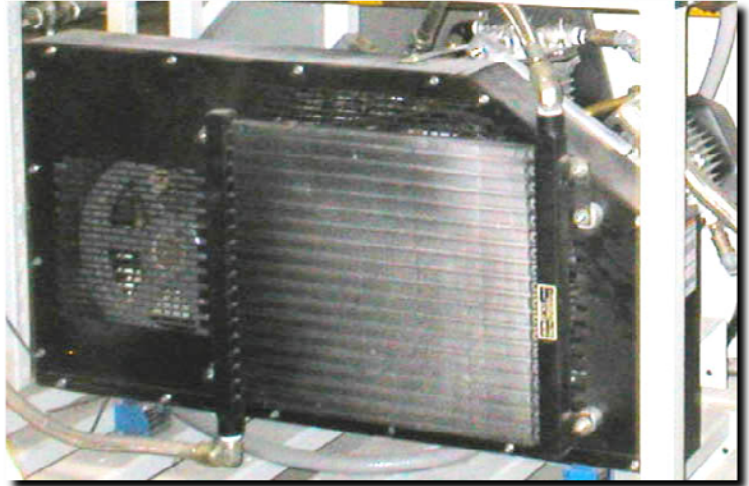
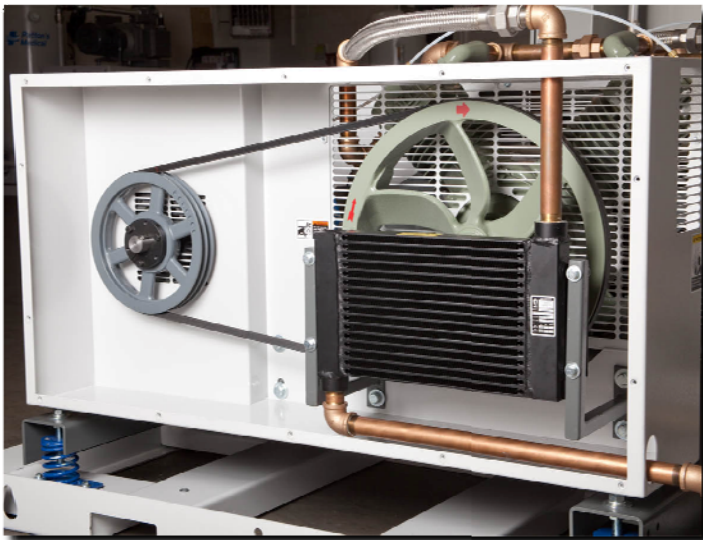


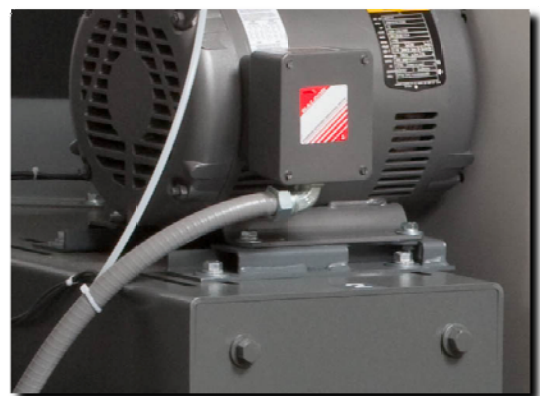
Tired of using a pipewrench to change your belts?



When some companies need to add an aftercooler to their package, they usually slap it on the outside of the belt guard and run some piping to it. This makes changing or adjusting the belts rather difficult. Most times you have to disconnect the piping in order to take off the guard's front cover. This can be awkward, heavy and increase the chance of damage or an air leak after reassembly.



At Patton's Medical, we placed the aftercooler inside the guard allowing for the appropriate distance from the flywheel for proper cooling. The piping does not interfere with the belt guard cover and the belts can therefore be easily removed or adjusted. We also added slotted holes and adjustment screws to the compressor/motor base to help slide the motor for more accurate belt adjustment.



Creating Medical Gas Solutions...for Life