

# Area Alarm

## General Specifications:

The Area Alarm Panel digitally displays gas pressure (0.5 psi increments) and monitors and displays normal and alarm conditions for up to 14 medical gases. Transducers are included and may be mounted in the alarm back box or remotely.

The panel shall be microprocessor controlled and designed to comply with NFPA 99. The panel shall be 100% digital and shall not require re-calibration. The alarm panel shall be enclosed in a steel box and shall be designed to accept an electrical input range of 120-240 volts AC - 50-60 hertz. The source voltage shall be stepped down with a self-contained transformer. The panel shall contain audible and visual alarm indicators. The audible alarm may be silenced by pressing the alarm silence button, but the visual alarm indicator can only be cancelled by fault correction. The alarm shall detect and filter out transient (less than 0.6 seconds) signals created by R.F.I. The alarm shall be capable of displaying alarm history for all possible alarm conditions.



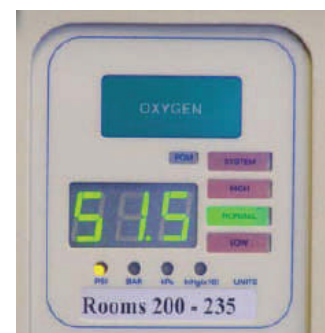
Each vertical slot shall display up to three gases. The alarm shall be capable of monitoring and displaying up to 14 gases per panel. Gas modules can be arranged in accordance with the customer's requirements.

In addition, each Area Alarm Module shall incorporate the following features:

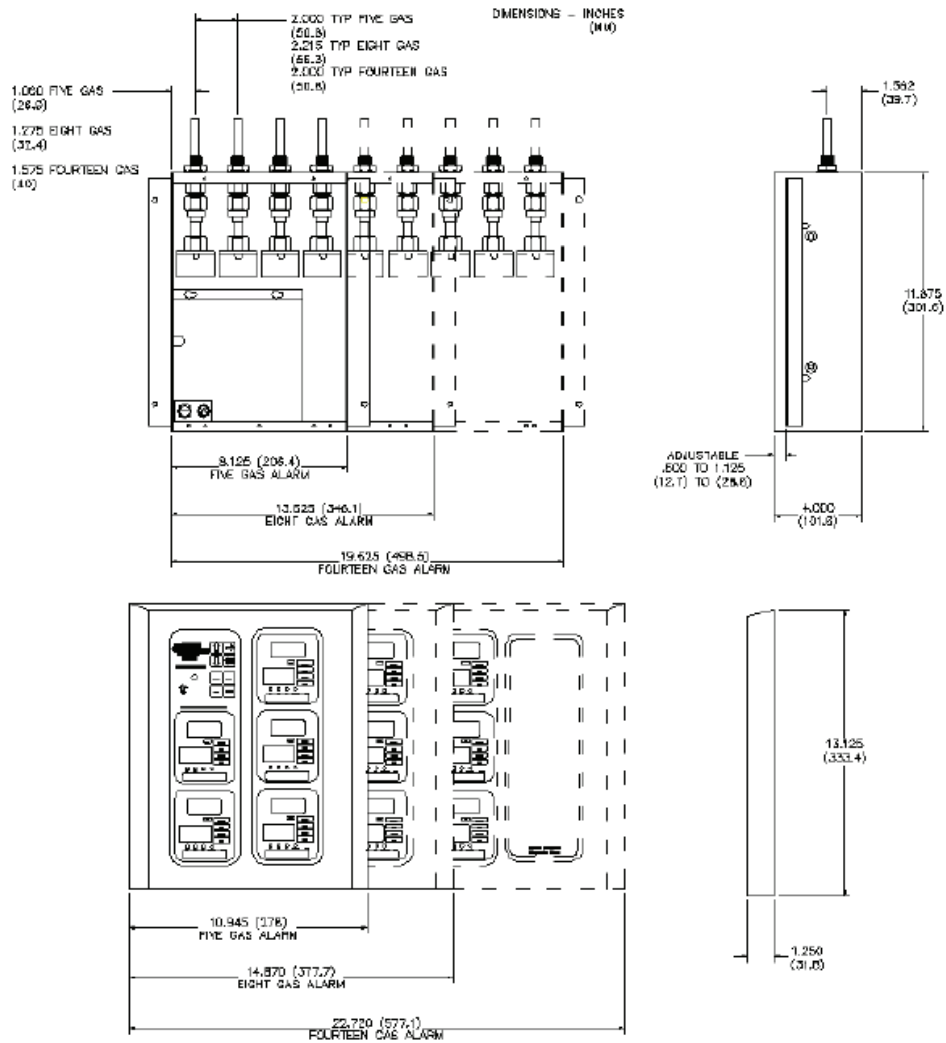
- Does not require re-calibration
- Gas specific sensor with DISS nut & nipple. An error message will be displayed if incorrect sensor or no sensor is attached
- User programmable pressure limits (Programmed from factory at 60/40 psig and 12 in Hg)
- Shall be capable of displaying gas readouts in PSI (in Hg), BAR or kPa, button selected
- Gas alarm repeat feature factory set at 10 minutes, adjustable from 1 minute to 999 minutes, or off
- Digital Transducers to be mounted inside the alarm for easy access, or may be mounted remotely up to 5,000 ft. (1,524 m) utilizing twisted pair wiring
- Gas specific DISS risers with serviceable Frontall™ (front end loaded) cartridge demand check valve

## Features:

- ETL listed to UL-1069 and CSA-C22.2 No. 205
- Complies with NFPA 99
- Self-contained unit - designed for ease of installation and service
- Microprocessor controlled
- Self-diagnostic (test button) and error message display for ease of maintenance
- Audio and visual alarm indicators
- Bright easy to read L.E.D. displays - clearly visible in both day and night lighting conditions
- Constant display and monitoring of each gas
- User programmable high/low set points
- Dry contacts for remote monitoring of all alarm conditions on each gas module and on the CPU module for the entire panel
- Alarm history display of previous alarm conditions
- Easy to read - color coded gas modules
- Hinged frame with lanyards for easy accessibility
- Optional Ethernet compatible for communications
- Three year PC Board Warranty



**Technical Specifications:**



## Model Numbers

### A1A-XXXXXXXXXXXXXXXX

**The Letter "X" Defines the Type of Gases:**

Oxygen = O	WAGD (NFPA) = W
Medical Air = A	AGSS (ISO) = E
MedVac = V	Instrument Air = I
Nitrous Oxide = 2	Blank Module = B
Nitrogen = N	Blank Space = X
Carbon Dioxide = C	Future = F

**NOTE: AVAILABLE ONLY IN 2, 3 & 5 SLOT BOXES**