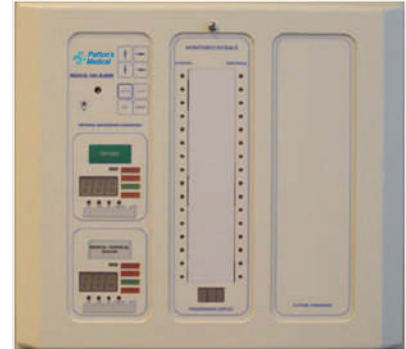


Combination - Area / Master Alarm

General Specifications:

The Area/Master Alarm Panel monitors and displays normal and alarm conditions for up to 14 medical gases or up to 64 remote medical gas source signals in various combinations. Transducers are included. Pressure switches and DISS union check valve connectors are sold separately.

The panel shall be microprocessor controlled and designed to comply with NFPA 99. The panel shall be 100% digital and shall not require re-calibration. The alarm panel shall be enclosed in a steel box and shall be designed to accept an electrical input range of 120-240 volts AC - 50-60 hertz. The source voltage shall be stepped down with a self-contained transformer. The panel shall contain audible and visual alarm indicators. The audible alarm may be silenced by pressing the alarm silence button, but the visual alarm indicator can only be cancelled by fault correction. The alarm shall detect and filter out transient (less than 0.6 seconds) signals created by R.F.I. The alarm shall be capable of displaying alarm history for all possible alarm conditions. Each gas module shall display up to three gases. Each source signal module shall monitor 16 signals. The alarm shall be capable of monitoring and displaying up to 14 gases per alarm panel, or 64 medical gas source signals, or any combination in increments of up to three gases or 16 source signals. The alarm may be an Area Alarm, Master Alarm or Combination Area/Master. Gas or source modules can be arranged in accordance with the customer's requirements.



In addition, each Area Alarm Module shall incorporate the following features:

- Does not require re-calibration
- Gas specific sensor with DISS nut & nipple. An error message will be displayed if incorrect sensor or no sensor is attached
- User programmable pressure limits (Programmed from factory at 60/40 psig and 12 in Hg)
- Shall be capable of displaying gas readouts in PSI (in Hg), BAR or kPa, button selected
- Gas alarm repeat feature factory set at 10 minutes, adjustable from 1 minute to 999 minutes, or off
- Digital Transducers to be mounted inside the alarm for easy access, or may be mounted remotely up to 5,000 ft. (1,524 m) utilizing twisted pair wiring

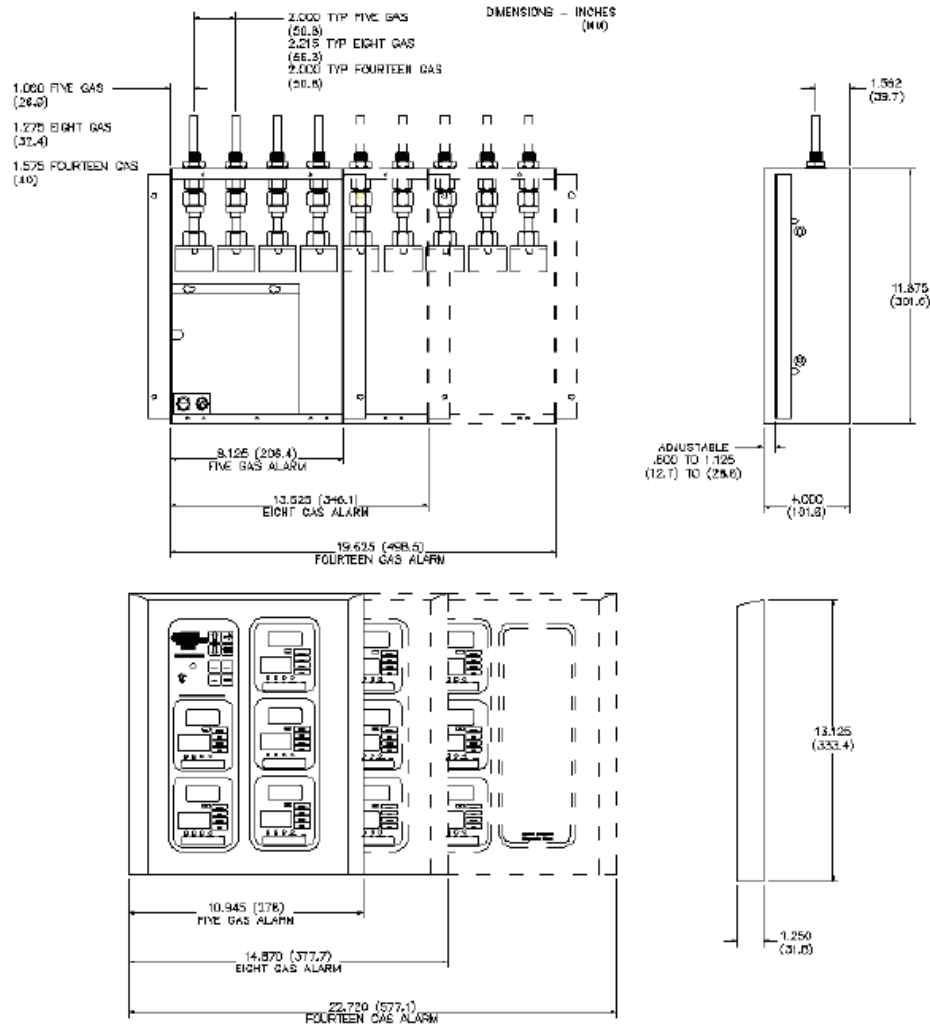
In addition, each 16 signal Master Alarm Module shall incorporate the following features:

- User programmable to accept NO or NC signals, or not be used at this time (disabled). Factory preset to accept Normally Closed signals
- Each signal point may be individually programmed, NC or NO or turned OFF (disabled)
- LED indicators (Green) confirms normal status, (Red) indicates abnormal condition
- Each signal easily labeled and positioned to suit any requirement using self adhesive labels provided with the alarm

Features:

- Complies with NFPA 99
- Designed for ease of installation and service
- Microprocessor controlled
- Self-diagnostic and error message display for ease of maintenance
- Audio and visual alarm indicators
- Bright easy to read L.E.D. displays - clearly visible in both day and night lighting conditions
- Constant display and monitoring of each gas
- User programmable high/low set points and remote signal alarm points (NC, NO or OFF)
- Dry contacts for remote monitoring of all alarm conditions on each gas module and on the CPU module for the entire panel
- Alarm history display of previous alarm conditions
- Easy to read - color coded gas modules
- Hinged frame with lanyards for easy accessibility
- Optional relay circuit board available for interface to building management system (master alarm signals only)
- Optional Ethernet compatible for communications
- Three year PC Board Warranty

Technical Specifications:



Model Numbers

A1A-XXXXXXXXMM

Each "M" Stands for 16 Functions

The Letter "X" Defines the Type of Gases:

Oxygen = O	WAGD (NFPA) = W
Medical Air = A	AGSS (ISO) = E
MedVac = V	Instrument Air = I
Nitrous Oxide = 2	Blank Module = B
Nitrogen = N	Blank Space = X
Carbon Dioxide = C	Future = F

NOTE: Add "R" Suffix to the end of the Part number if Relay board is required

NOTE: AVAILABLE ONLY IN 2, 3 & 5 SLOT BOXES